

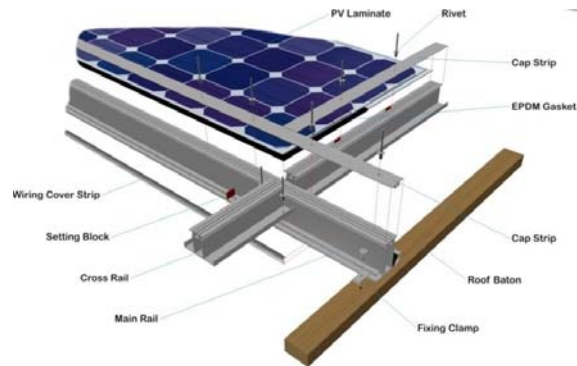
What is RIS?

The RIS (roof integrated system) is a robust, flexible, low maintenance and easy to handle PV mounting system.

This low-cost mounting system for solar panels can be used for pitched roofs or facades, retrofit or new build applications.

The RIS system is suitable for all domestic applications:

- Replaces roof tiles, saving on the cost of this layer of roofing material.
- Has an internal water drainage system
- Is fully weatherproof
- Riveted construction discourages theft
- Low profile - merge into roof line
- Internal natural cooling/ventilation - maximises performance
- 15 Year track record
- UK made and MCS approved



Which size RIS system can you fit on your roof?

The table below gives an approximate estimate of the kWp that can be generated depending on the area of the available space on your roof.

Additional area may be required for flashings depending on the roof covering type.

| RIS' SYSTEM PEAK RATED POWER (kWp) | | 1.2 | 1.68 | 1.92 | 2.88 | 3.84 |
|-----------------------------------------------------|-------------------|--------------|--------------|--------------|---------------|---------------|
| SOLAR LAMINATE SPEC | | GB-SOL120L | GB-SOL120L | GB-SOL120L | GB-SOL120L | GB-SOL120L |
| NO. OF SOLAR LAMINATES | | 10 | 14 | 16 | 24 | 32 |
| Total Distributed System Weight | | 150 | 200 | 225 | 330 | 450 |
| OVERALL RIS SYSTEM DIMENSIONS ¹ (approx) | Length (m) | 3.4 | 4.7 | 5.4 | 8.1 | 10.8 |
| | Height (m) | 2.7 | 2.7 | 2.7 | 2.7 | 2.7 |
| Arrangement | | 2x5 Portrait | 2x7 Portrait | 2x8 Portrait | 2x12 Portrait | 2x16 Portrait |
| System Area (approx) | (m ²) | 10 | 13 | 15 | 22 | 30 |

NOTE ¹ RIS system dimensions exclusive of standard flashing system
 Typical roofs should allow for a tiling allowance around system. For systems closer to the edge of the roof, bespoke gable end flashings may be used, please ask

